



MAGELLANO

30
METRI

PRELIMINARY PRESENTATION



NEW MAGELLANO 30METRI

AT ONE
WITH THE SEA





EXTERIOR DESIGN BY **KEN FREIVOKH**



The exteriors of the Magellano 30 metri have been designed by Ken Freivokh, a renowned figure in the world of boat design and the name behind some of the world's most stunning megasailers. The vision that guided his design of the lines of the boat was wonderfully simple: to create an object of timeless, exquisite beauty, immune to passing fads and trends. A superstructure entirely in glass, conceived to recreate the idea of a penthouse overlooking the sea, is the central element around which the entire design revolves. Customised teak louvres on either side of the aft area of the deckhouse add an indefinable personality to the boat's silhouette.







The cockpit is characterised by an original and generous layout designed for conviviality. The three large sofas create the perfect space to share with family and friends the wonder of the sea.





WHATEVER YOU NEED WHEREVER YOU WANT



Thanks to the abundant space and an innovative layout, the bow lounge area offers a wide sun pad, a comfortable sofa and coffee tables. It can also be equipped with an optional hot tube.



INTERIOR DESIGN BY VINCENZO DE COTIIS

Surprising and unconventional, the Magellano 30METRI is a masterpiece that seamlessly fuses art and the sea.

The interior lines were designed by Vincenzo De Cotiis, an architect and designer with an attitude that hovers more towards the art world. Given his longstanding love of fibreglass, which he has used in the creation of many of his works, there is a wonderful symmetry in the collaboration, when you consider that for Azimut Yachts, this material is an essential construction element.

Fluid, surprising forms, an out-of-the-ordinary conjugation of the sea and its surroundings, together with light-flooded spaces all combine to make the Magellano 30METRI a truly extraordinary boat that seems suspended in time and poised to weigh anchor at any moment in a quest to rediscover the simple essence of travel.





Thanks to the wide windows all around the salon, stern side included, the light flows freely and the structure of the yacht seems dematerialized.



From elegant brass detailing to a sophisticated selection of fabrics from Loro Piana Interiors, every element evokes aspects of the sea in all its authentic beauty and power.





A happy fusion of precious materials and unexpected elements takes on a deeper, richer dimension as the light artfully picks out details and brings them to life to create a natural sense of the sea environment.

A textile artwork realised by Vincenzo De Cotiis embellishes the headboard.





ELEGANCE
AND **INSPIRATION**



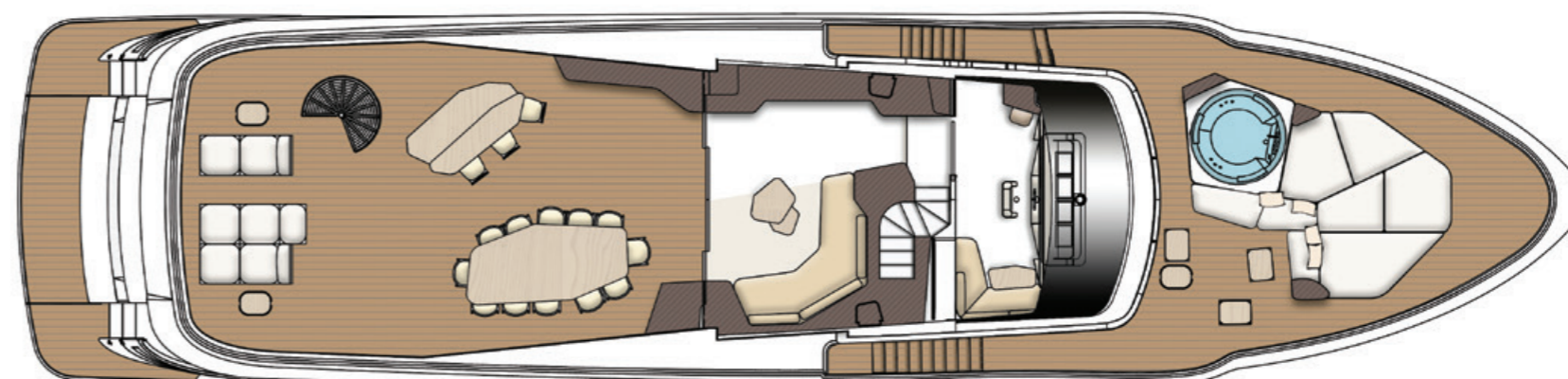




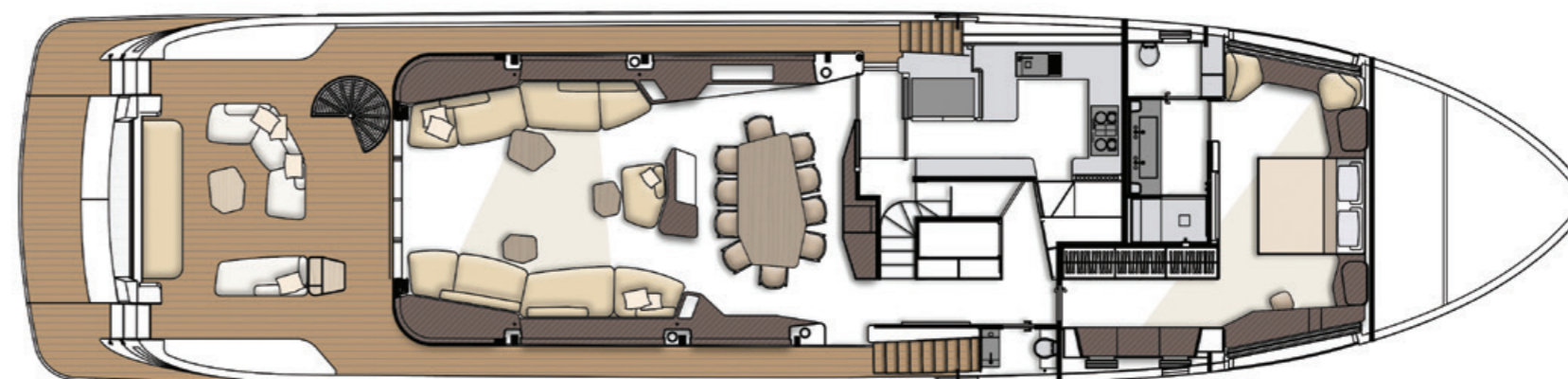
MAIN PROJECT DATA

MAGELLANO 30METRI

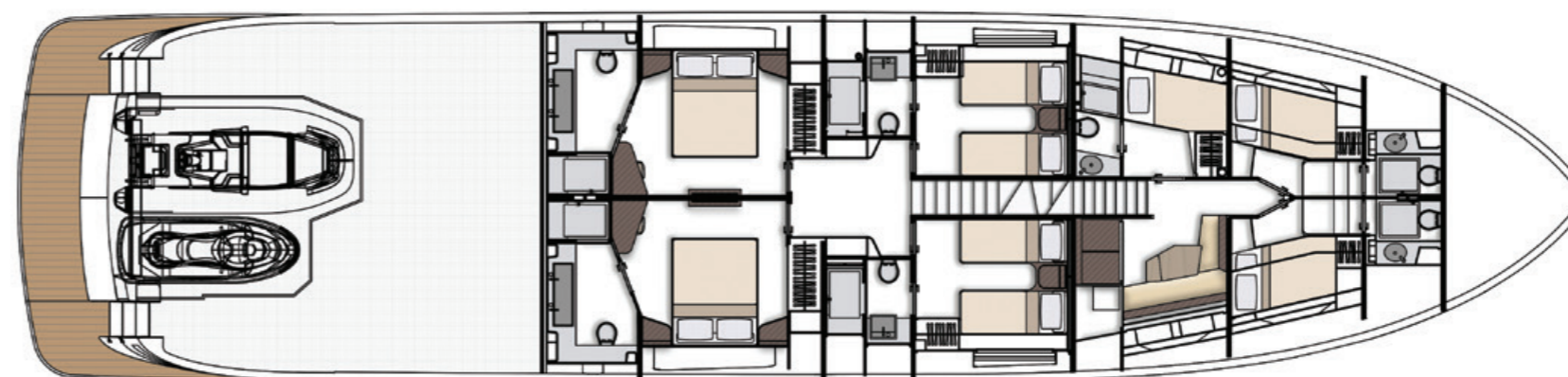
Length overall (incl. pulpit)	29,63 m (97' 6")
Beam max	7 m (22' 12")
Draft (incl. props at full load)	2,03 m (6' 8")
Displacement (at full load)	135 t
Engines	2 X 1550 HP MAN
Maximum speed	up to 20 knots
Cruising speed	16 knots
Fuel capacity	14500 l (3831 US Gal)
Fresh water capacity	2000 l (528,40 US Gal)
Black water capacity	900 l (238,78 US Gal)
Gray water capacity	900 l (238,78 US Gal)
Cabins	5 + 3
Berths	10 + 5
Head compartments	6 + 3
Exterior design	Ken Freivokh
Interior designer	De Cotiis Architects



FLYBRIDGE



MAINDECK

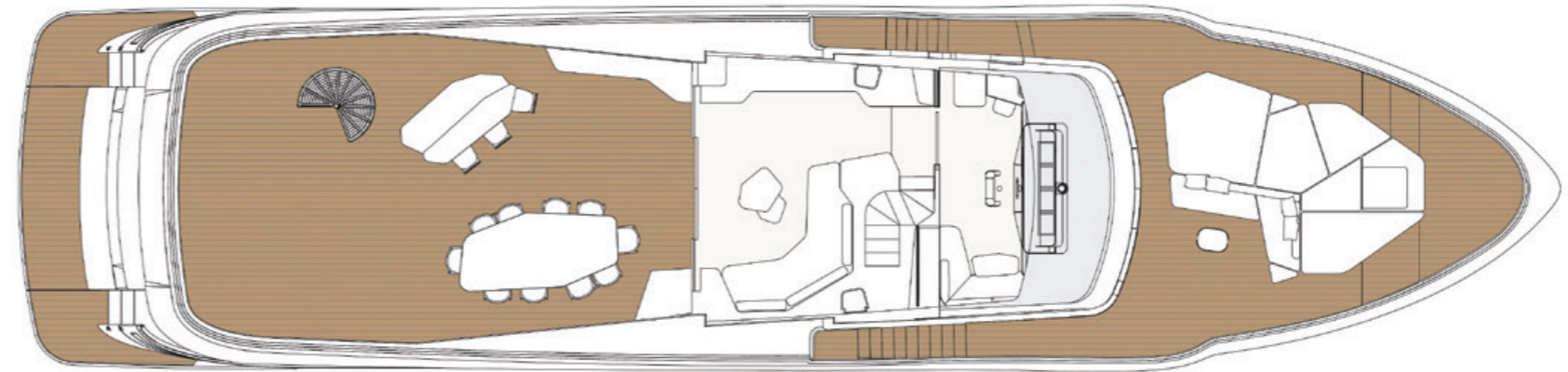


LOWERDECK

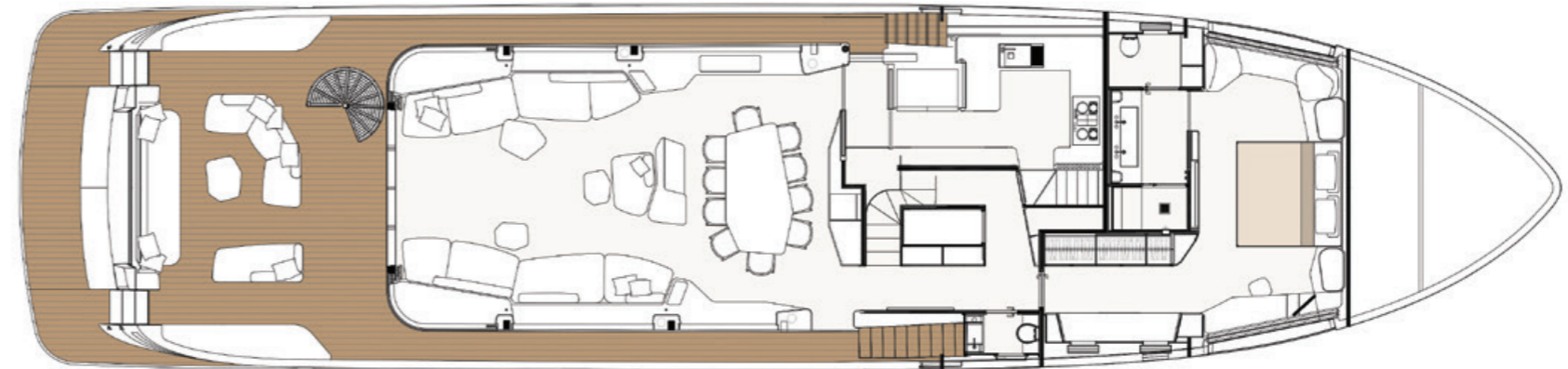
MAGELLANO
30
METRI

GENERAL PLANS - STANDARD CONFIGURATION

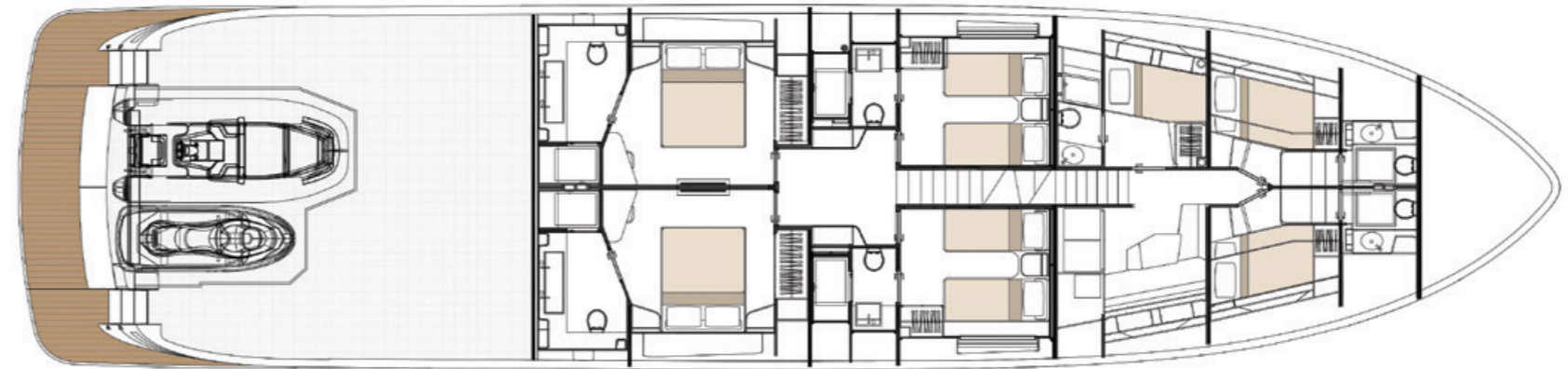
MAGELLANO 30METRI



FLYBRIDGE



MAINDECK



LOWERDECK

MAGELLANO
30
METRI



AZIMUTYACHTS.COM

This brochure in no way constitutes a contract of sale for the boatyard's vessels to any person or company. All information contained herein, including but not limited to technical and performance data, illustrations, and drawings, is non-binding and for purposes of illustration only. The information in this brochure refers to the boatyard's standard motoryacht models available as of the date of publication. Technical and descriptive information is valid only to the extent that it pertains to the specific vessel that is the subject of a purchase. Contract terms are valid only to the extent that they are contained in a contract of sale. This document is based on information available at the time of publication. Despite efforts to ensure the greatest possible accuracy, the information contained herein may fail to cover all details, omit technical or commercial changes that may have been made subsequent to publication, describe features that are not present, and fail to envisage all circumstances that might occur. Any illustrations, photographs, diagrams and examples shown in this brochure are included solely for the purposes of illustrating the text. Due to the different features of each vessel, the boatyard assumes no liability for actual use based on the illustrated applications.