



2026 Azimut Fly 82

EXCLUSIVE SALES

Combining striking Italian design with cutting-edge technology, this 24.79 m flybridge yacht delivers exceptional performance, comfort, and innovation. Powered by triple Volvo Penta IPS engines and equipped with premium systems such as Seakeeper stabilization, advanced Garmin electronics, and luxurious interior upgrades, she offers a refined cruising experience with outstanding efficiency and maneuverability. Designed for both private enjoyment and high-end entertaining, this yacht is scheduled for delivery in May 2026.

DESCRIPTION:



Cabins
4+1



Length
24.79 m



Draught
1.20 m



Beam
5.87 m



Engine
3 x Volvo Penta
IPS 1200 – 900 hp

TECHNICAL SPECIFICATION:

Built year: 2026

Displacement: 63.2 t

Water tank: 1100 l

Fuel tank: 5700 l

Berths: 8+2

Head Compartments: 5+1

Cruising speed (knots): 25

Max speed (knots): 32

GENERAL FEATURES

- Length overall: 24.79 m (81' 4")
- Maximum beam: 5.87 m (19' 3")
- Draft: 1.20 m (3' 11")
- Displacement: 63.2 t
- Fuel capacity: 5,700 l (1,505.8 US gal)
- Water capacity: 1,100 l (290.6 US gal)
- Cabins: 4 + 1 crew
- Berths: 8 + 2 crew (3 optional)
- Head compartments: 5 + 1 crew
- Maximum speed: up to 32 kn
- Cruising speed: 25 kn

ENGINES

- 3 x Volvo Penta IPS 1200 – 900 hp
- 3 x Volvo Penta IPS 1350 – 1000 hp (OPT)

MAIN SYSTEMS

- Cockpit docking station
- Double motorized shore power cord reel
- Proportional bow thruster
- Seakeeper Stabilizer 26
- Watermaker 180 l/h

EXTERIOR

- Hauling/launching system for tender
- Lounge furniture on aft fly with C-shape sofas in Batyline fabric and coffee table
- Luxury exterior lighting package
- Maneuvering lights on bow
- Manual awning in cockpit with carbon fiber poles
- Midship cleats
- Manual awning on aft fly with carbon fiber poles
- Nr. 2 exterior stools for flybridge bar
- Removable shower on aft
- Spreader lights on aft fly (Nr. 6)
- Synthetic top for flybridge bar furniture
- Teak on flybridge deck
- Telescopic gangway
- Underwater lights under sponsons (2x2) and transom (3)
- Upgraded exterior cushions in Batyline fabric
- Additional waterproof socket
- Automatic stainless steel and teak ladder connecting transom to swim platform
- Bow sun shade with removable carbon fiber poles
- Bow table with synthetic top
- Cockpit enclosure with side accesses
- Cockpit furniture with teak top
- Teak cockpit table with hi-lo system
- Deck2Deck
- Dimmer lights for flybridge
- Electric cockpit privacy awning
- Flybridge furniture with storage and upgraded synthetic top

- Flybridge hatch
- Fresh water connection for bow and stern deck washing
- Hard top (painted in Etna Grey)

INTERIOR

- Black-out roller blinds for master cabin curtains
- Dinette table Nube with Bordeaux base and Botticino marble top
- Co-pilot seat in main helm
- Dimmer lights in lower deck cabins
- Dimmer lights on main deck
- Dividing wall with door in crew cabin
- Master head top and sinks in Botticino marble
- Mosquito nets for portholes
- Automatic roller blinds in salon
- Roman blinds in master cabin
- Roman blinds in VIP and guest cabins
- Toilet with bidet faucet in master head
- Toilet with bidet faucet in VIP and guest cabins
- Toilet with bidet faucet in day head
- Vanity top in Botticino marble
- Wooden floor in main helm, galley and crew stairs
- Wooden floor in salon and dinette
- Safe in master cabin
- Third bed in crew cabin

APPLIANCES

- Dishwasher
- Barbecue for flybridge furniture
- Icemaker on fly
- Refrigerator for cockpit furniture
- Washer and dryer (separate units) in crew cabin
- Wine cooler in galley

ELECTRONICS

- Garmin Gold package
- Watchit Anti-collision System – Gold package (includes Garmin AIS 800)
- Garmin video cameras (nr. 3)

VIDEO, TV & HIFI

- Hi-lo TV mechanism in master cabin (TV not included)
- Hi-lo system for TV in salon (TV not included)
- Smart Audio/Video Package

DOCUMENTS

- Builder's Certificate
- Exportation documents

SERVICES

- PDI & Commissioning
- Delivery in International Waters

CUSTOM

- WC Tecma with faucet feature in crew head
- Delivery date: 05/2026

PRICE:

€ 6.257.000 excl. VAT

2026 Azimut Fly 82

EXTERIOR



2026 Azimut Fly 82

EXTERIOR



2026 Azimut Fly 82

EXTERIOR



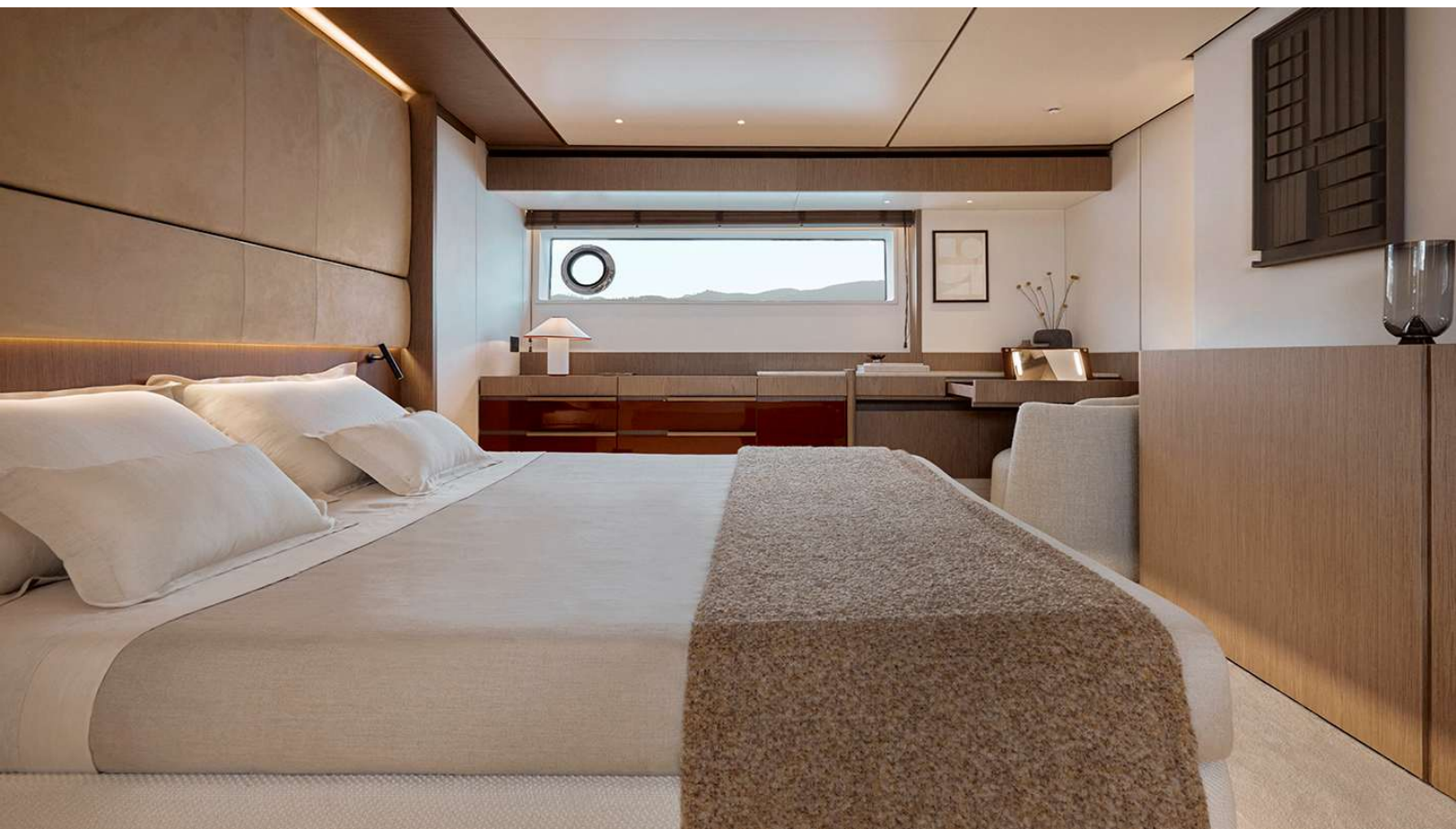
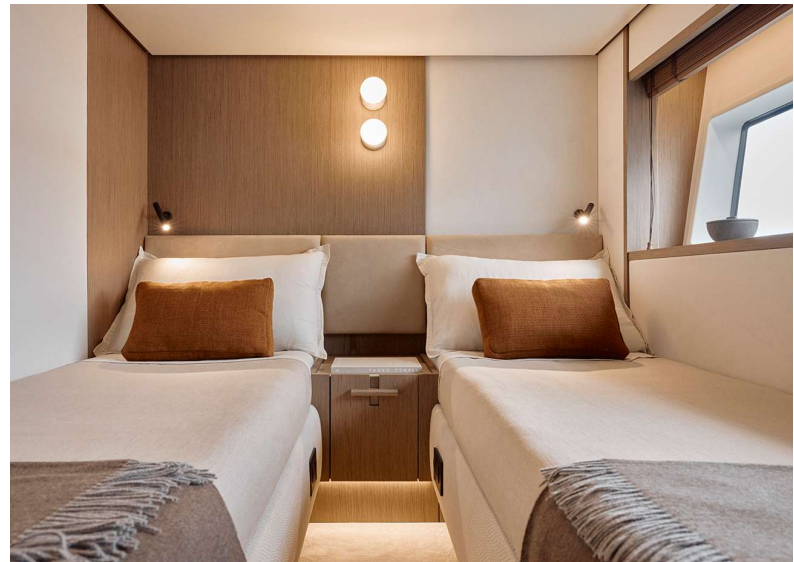
2026 Azimut Fly 82

INTERIOR



2026 Azimut Fly 82

INTERIOR



2026 Azimut Fly 82

INTERIOR

