



2011 Sessa Marine C68 Cruiser

EXCLUSIVE SALES

Combining Italian elegance, exhilarating performance, and exceptional onboard comfort, this well-maintained 2011 luxury cruiser offers a refined yachting experience for private ownership. Privately used since new, VAT paid, and comprehensively equipped, she features spacious accommodation, impressive entertaining areas, and reliable Volvo IPS propulsion, making her an outstanding turnkey yacht for the upcoming season.

Designed by Christian Grande, her sophisticated interior blends contemporary styling with a warm residential atmosphere, while expansive outdoor living spaces, premium finishes, and a full suite of onboard amenities deliver comfort, practicality, and effortless cruising in equal measure.

DESCRIPTION:



Capacity
14



Length
21.03 m



Draught
1.24 m



Beam
5.08 m



Engine
VOLVO D13 IPS 1200

TECHNICAL SPECIFICATION:

Built year: 2011

Displacement: - t

Water tank: 1000 l

Fuel tank: 3200 l

Heads: 3

Engine hours: 1600 h

Cruising speed (knots): 24 kn

Maximum speed (knots): 36 kn

ADVANCE PACKAGE

DIMENSIONS

- Length Overall: 21.03 m
- Beam: 5.08 m
- Max Draft: 1.24 m
- Hull Material: Fiberglass
- Hull Shape: Planing
- Maximum Speed: 36 knots
- Cruising Speed: 24 knots
- Range: 350 nautical miles
- Maximum Passengers: 14

ENGINES

- 2 x VOLVO D13 IPS 1200 diesel engines
- 900 HP each
- Pod Drive propulsion system
- Joystick control
- Engine Hours: approx. 1,560–1,600 hours
- Generator Hours: approx. 3,800 hours
- Bow thruster

MAIN SYSTEMS

- Air conditioning system
- Generator
- Shore power inlet 220V
- Inverter
- Battery system
- Battery charger
- Main circuit breaker
- Pressurized water system
- Hot water system
- Watermaker / fresh water maker
- Electric windlass (bow)
- Electric windlass (stern)
- Hydraulic trim tabs

ACCOMMODATION

- 3 guest cabins
- 1 crew cabin
- 3 guest heads
- Full-beam owner's cabin
- Guest cabin accommodation
- Separate crew quarters
- Spacious salon

INTERIOR

- Elegant contemporary interior styling
- Bright and spacious master cabin
- Beautifully integrated galley

- Wine cellar
- Electric toilets
- Flat screen TV
- Satellite TV
- On-board computer

APPLIANCES

- Freezer
- Deep freezer
- Refrigerator
- Second refrigerator
- Glass ceramic cooktop
- Extractor hood
- Sink
- Dishwasher
- Microwave oven
- Barbecue
- Washing machine
- Dryer

ELECTRONICS

- Radar
- Plotter with GPS
- Autopilot
- VHF radio
- Compass
- Depth sounder
- Speed log
- Navigation center
- Rudder angle indicator
- Rev counter
- Radio / CD player
- Cockpit speakers
- Automatic search satellite antenna

ADVANCE PACKAGE

EXTERIOR

- Hydraulic bathing platform
- Swimming platform
- Electric gangway
- Tender garage
- Bimini top
- Teak cockpit
- Teak side decks
- Cockpit table
- Cockpit cushions
- Bow sun cushions
- Stern shower
- Swimming ladder
- Transom door to bathing platform
- Underwater lights
- Leather cushion covers

- Exhaust flow system renewed

TECHNICAL EQUIPMENT

- Life raft for 10 persons
- Automatic fire extinguisher system
- Electric bilge pump
- Manual bilge pump
- Anchor with chain
- Anchor locker
- Windscreen wipers
- Underwater hull paint

TANK CAPACITY

- Fuel Tanks: 2 x 1,600 liters
- Fresh Water Tank: 1 x 1,000 liters
- Holding Tank: 200 liters

CONDITION

- Second owner from new
- Always privately used
- EU VAT paid
- Fully equipped specification
- Complete Volvo engine and IPS service completed for 2025 season
- Generator serviced
- Fresh antifouling applied
- Metal antifouling completed
- Hull polished and waxed
- Teak deck professionally treated
- Stainless steel polished
- Anodes / zincs replaced
- New hydraulic platform hoses installed
- New water pump installed

PRICE:

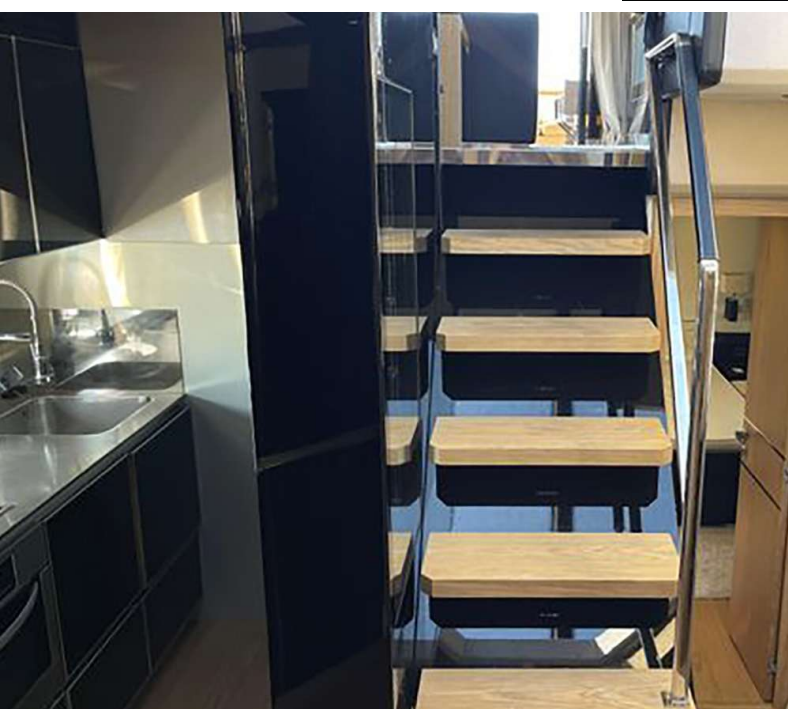
€ 529.000 VAT included

2011 Sessa Marine C68 Cruiser

EXTERIOR



2011 Sessa Marine C68 Cruiser
INTERIOR



2011 Sessa Marine C68 Cruiser
INTERIOR

